

## LOST IN THE GARDEN

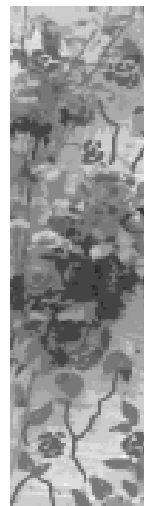
Here is a poem that wanders around different parts of a garden.

?

I know I had it yesterday  
And dropped it by the tree.  
I suppose it could have rolled away.  
Wherever can it be?



Perhaps it's underneath that nettle.  
I'll try and not be stung.  
Or possibly it came to settle  
Where the washing has been hung.



Or over by the compost heap,  
Or near the climbing rose,  
In the bush where robins cheep  
And prickly holly grows.



I'll have to live without it now,  
Though it came from Santa Claus.  
Oh, well. Never mind. You know, somehow,  
I've forgotten what it was!

?

1. The first verse gives you a hint that the shape of the thing that's lost is round. Write down the words that tell you.



---

---

2. How might the writer be stung?

---

---

3. What other plant in the poem might hurt the writer?

---

4. Name **two** parts of the garden in the poem that are not plants.

---

---

5. There are two big question marks on the page – one at the beginning and one at the end. What are the **two** questions being asked in this poem?

---

---

---

---